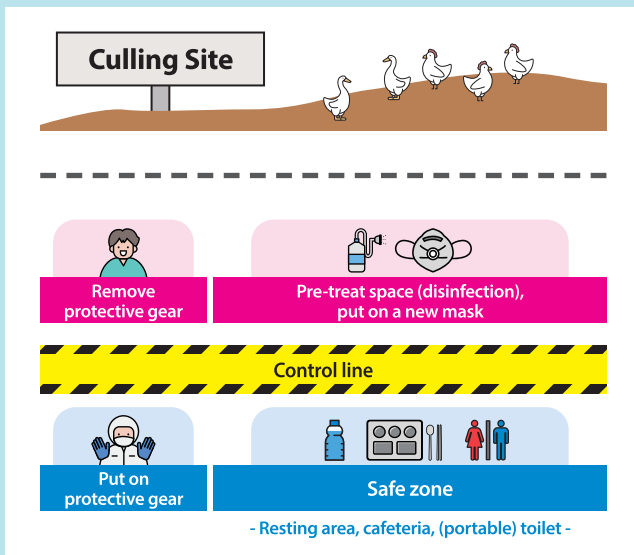


AI Site Area Guidance



Cooperate with the public health centers to confirm the occurrence of symptoms

- Please assertively cooperate with the investigation when the public health center contacts you to confirm the manifestation of symptoms after the culling operation.
- We will contact you on the 5th and 10th days after the date of the last culling, and we would like to request that you respond regardless of the presence of symptoms.

Precautions at the time of manifestation of symptoms after culling operation

- If there is development of symptoms such as fever over 38°C, muscle aches, cough or sore throat, please notify the public health center or call 1339 immediately.
- Avoid contact with other people including your family members if symptoms occur.
- Cover your mouth and nose when you cough or sneeze, and wear a mask when you go out.
- Get prescribed antiviral medication within 48 hours of manifestation of symptoms and administer it in accordance with the prescribed administration method and dose.

Let's stay healthy together! Avian Influenza Tips for Preventing Human Infection

Make sure to always wear personal protective equipment at the culling site! Change your personal protective equipment each time you newly enter the site.



**Korea Disease Control and
Prevention Agency**

Tips for Preventing Avian Influenza Human Infection

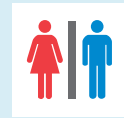


You can work more safely by preparing properly.

Inspect before putting on protective gear



Drink a glass of water



Go to the bathroom

What is Avian Influenza (AI)?

It is an influenza that occurs in birds such as wild birds, chickens and ducks, and it can infect humans and cause diseases.

How does AI infect people?

- AI virus can be infected when you touch your eyes, nose or mouth after having come in contact with infected birds, feces or contaminated objects, and it can also be infected by inhaling contaminated dust, although rare.
- People who are at higher risk for human infection by AI including farm-workers and those who participate in culling need to comply with the techniques of prevention in accordance with the instructions of the health authorities.



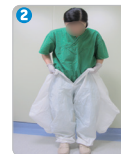
Precautions for participants in culling and staff responding to AI

- Make sure to wear personal protective equipment at all times (remove your own hat) and be careful not to be contaminated by them particularly when removing them.
- Put on personal protective equipment before entering the culling site and change it every time you newly enter the site.
- Avoid touching your eyes, nose and mouth with unwashed hands.
- Shower after having completed work.
- Notify the public health center or call 1339 immediately if there is the development of symptoms such as fever over 38°C, muscle aches, cough or sore throat.

Putting on Personal Protective Gear



Put on inner gloves



Put on protective clothing



Raise the zipper all the way up



Put on overshoes



Put on a mask



Put on safety goggles



Raise the hood of the protective clothing



Put on outer gloves

Remove Personal Protective Gear



Untie shoelaces



Take off outer gloves



Unzip the protective clothing



Take off the hood



Take off protective clothing



Take off goggles



Take off mask



Take off inner gloves